



What type of mask is okay?



All WCASD students and staff engaging in in-person schooling will be required to wear a face mask with two-ply material. Multi-layered Cloth and Disposable Surgical Face Masks provide best protection.

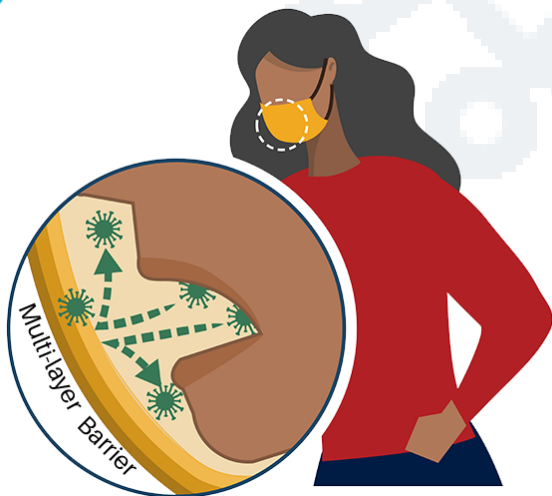
Acceptable

CLOTH FACE MASKS

Store-bought and homemade

DISPOSABLE SURGICAL FACE MASKS

They are meant for one-time use only.



Not Acceptable

X BANDANAS

Loose bandanas do not prevent the spread of respiratory droplets.

X GAITERS

Gaiters do not provide sufficient protection.

X MASKS WITH VALVES

Valves release exhaled droplets and don't protect others.

X FACE SHIELDS

*Only permitted with a note from a physician

Families are asked to provide masks for their children. If a child forgets theirs or it becomes unusable, masks will be available at school.