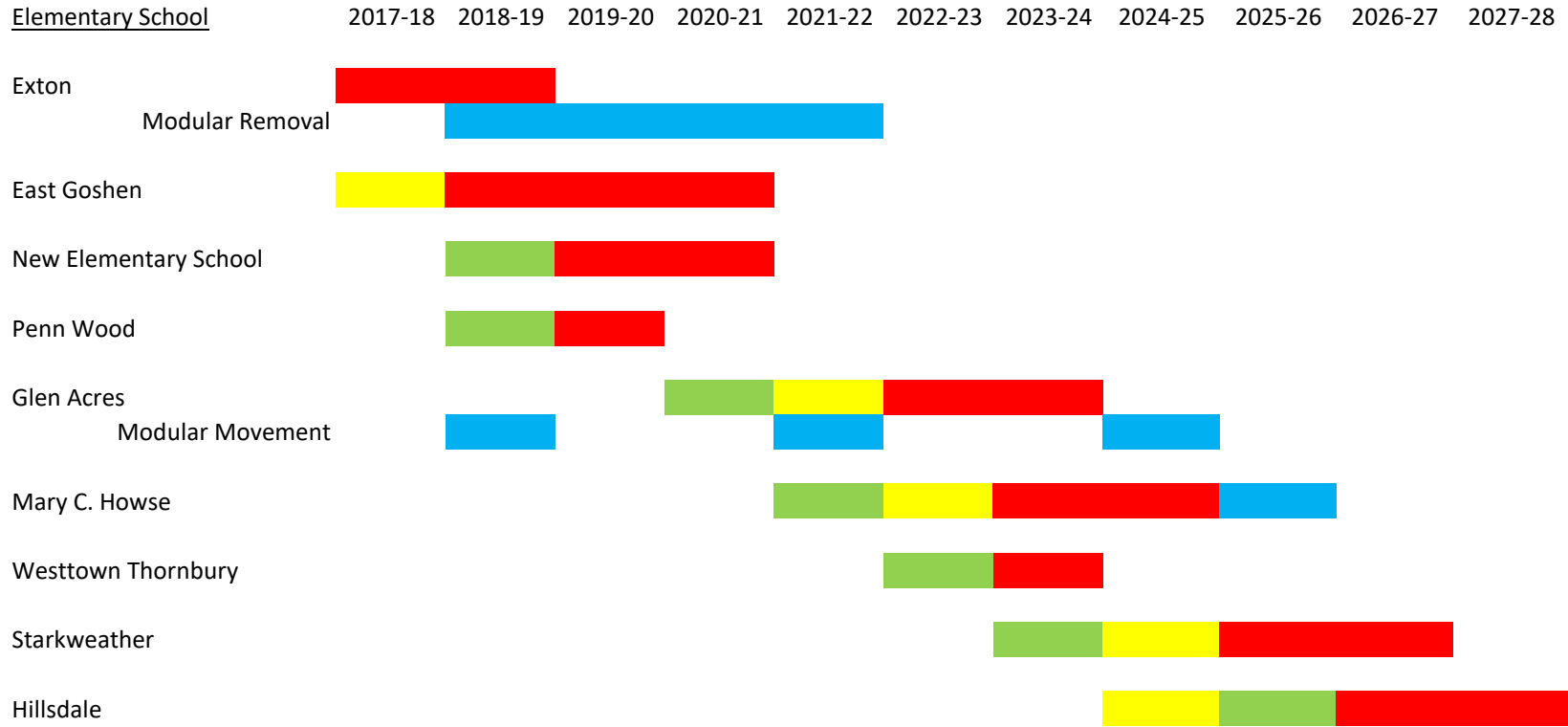
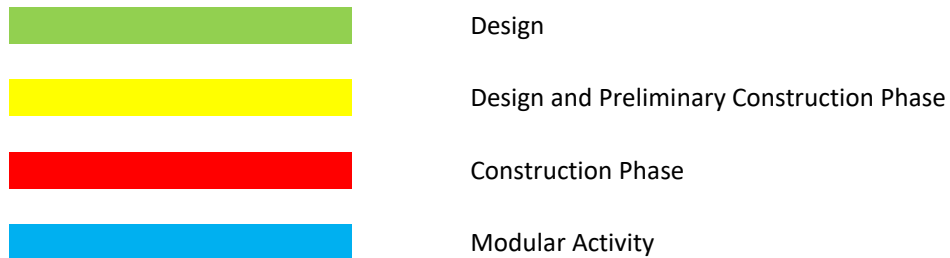


Option #3A Design and Construction Schedule for Master Plan



K-5 Operational Capacity *	5281	5328	5352	5352	5869	5869	5869	5845	5798	5798	5798
K-5 Projected Enrollment	5340	5508	5504	5557	5720	5849	5843	5860	5917	5904	5905
Difference	-59	-180	-152	-205	149	20	26	-15	-119	-106	-107



*Includes modular capacity