




Homework Policy Meeting January, 2017

Guiding questions for our policy development

- ▶ **What is the purpose of homework and how can we make it meaningful?**
- ▶ **How much time is appropriate for students to spend completing homework?**
- ▶ **How does homework impact your family?**



Research shows homework should.....

- **Complement classroom instruction**
- **Provide practice and reinforcement of skills**
- **Encourage parent and child interaction**
- **Expand learning to deepen understanding**

Homework Research: The Benefits (Cooper, et.al.)

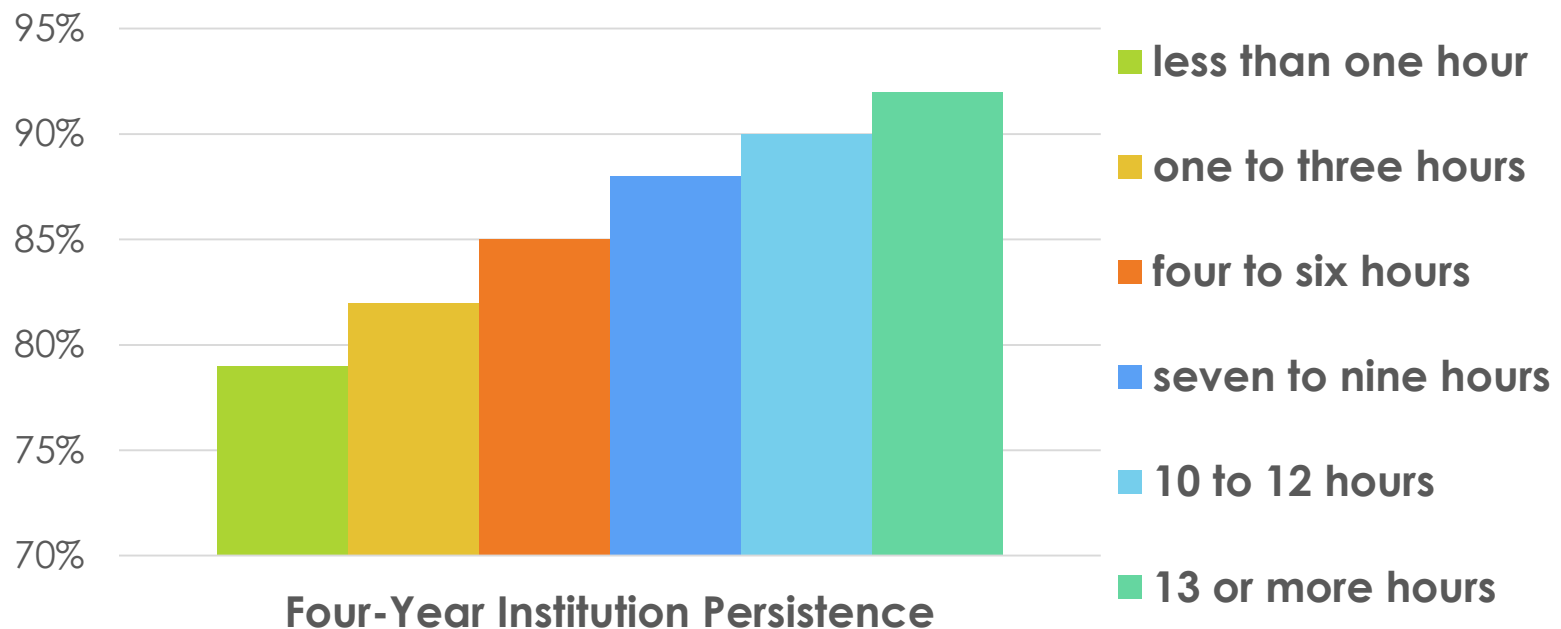
- **Students who perceive homework assignments to be meaningful demonstrate greater academic achievement.**
- **Students completing homework at all grade levels tend to have higher test scores than those who do not complete homework.**
- **The absence of homework may cause students to fall behind.**

Homework Research: The Benefits (Cooper; Marzano)

- **Correlation between homework and student achievement at the elementary level is inconclusive, but other research shows that it fosters independence, time management skills, responsibility**
- **Positive relationship between homework and academic achievement at secondary level**

Homework Research: The Benefits

For the average high school student planning to attend college, there is a correlation to high school homework and college graduation rate. Less than one hour of homework a week equates to a 79% graduation rate. Greater than 13 hours a week equates to a 92% graduation rate.



Homework Research: The Concerns

- **There is no research available to support the “10 minute rule” and many schools are flying blind.**
- **There is not enough research on homework time at the elementary level.**
- **Without home supports, many students will struggle and be marginalized, grades may fall as points are taken away, etc.**

Other Concerns

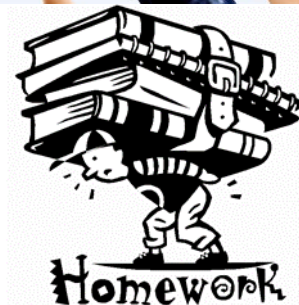
Without homework:

- ▶ Student achievement will suffer
- ▶ Students won't be competitive and won't be prepared for the next grade level or school
- ▶ Students won't be prepared to handle the homework/workload of college



Too much homework:

- ▶ Stresses students and families
- ▶ Makes students sour on school and dislike writing, reading, and math
- ▶ Interferes with family time, extra-curricular activities, etc.



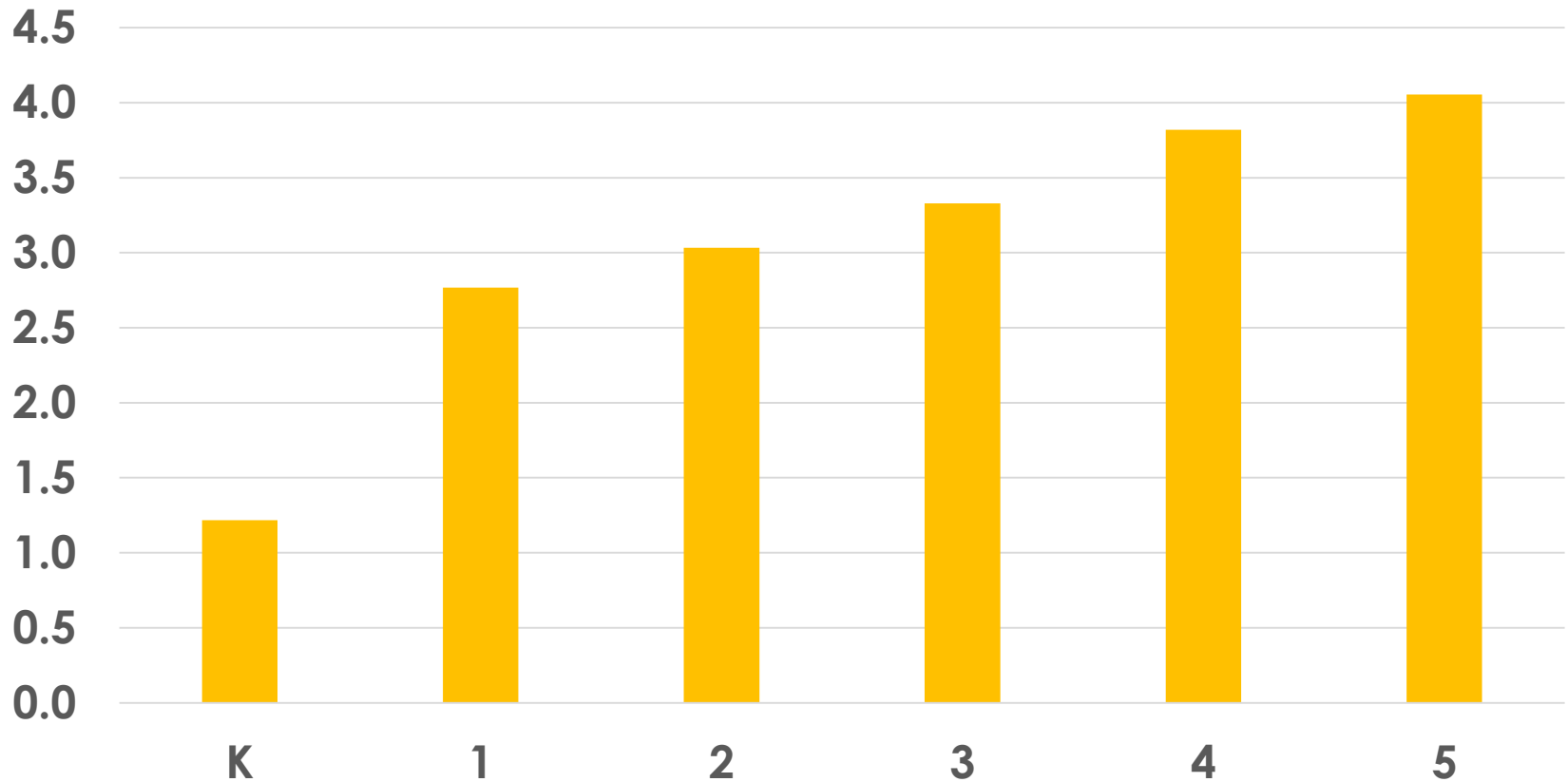
Elementary School Homework Survey Data

- **Interviewed 116 students**
- **Students were asked to track homework and study minutes in Math, Reading, and Writing.**
- **Represented cross-section of all students (Special Education, Gifted, English Language Learners, etc.)**



Elementary School Survey Data

Average HW & Study Hours by Week & Grade



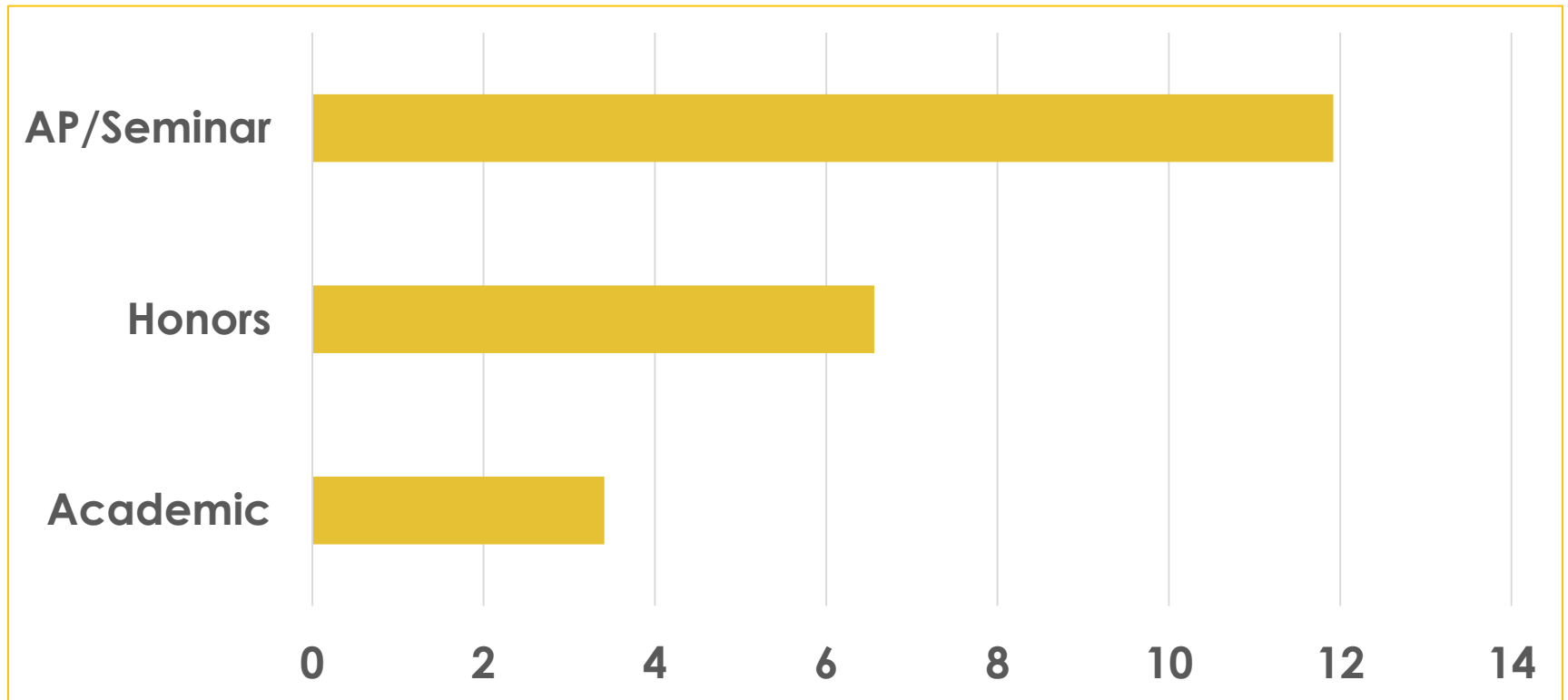
High School Survey Data (61 Secondary Students)

- ▶ On average, high school students reported receiving approximately 6.5 hours per week of homework.
- ▶ National trends show that Advanced Placement classes tend to be assigned more homework than other classes.



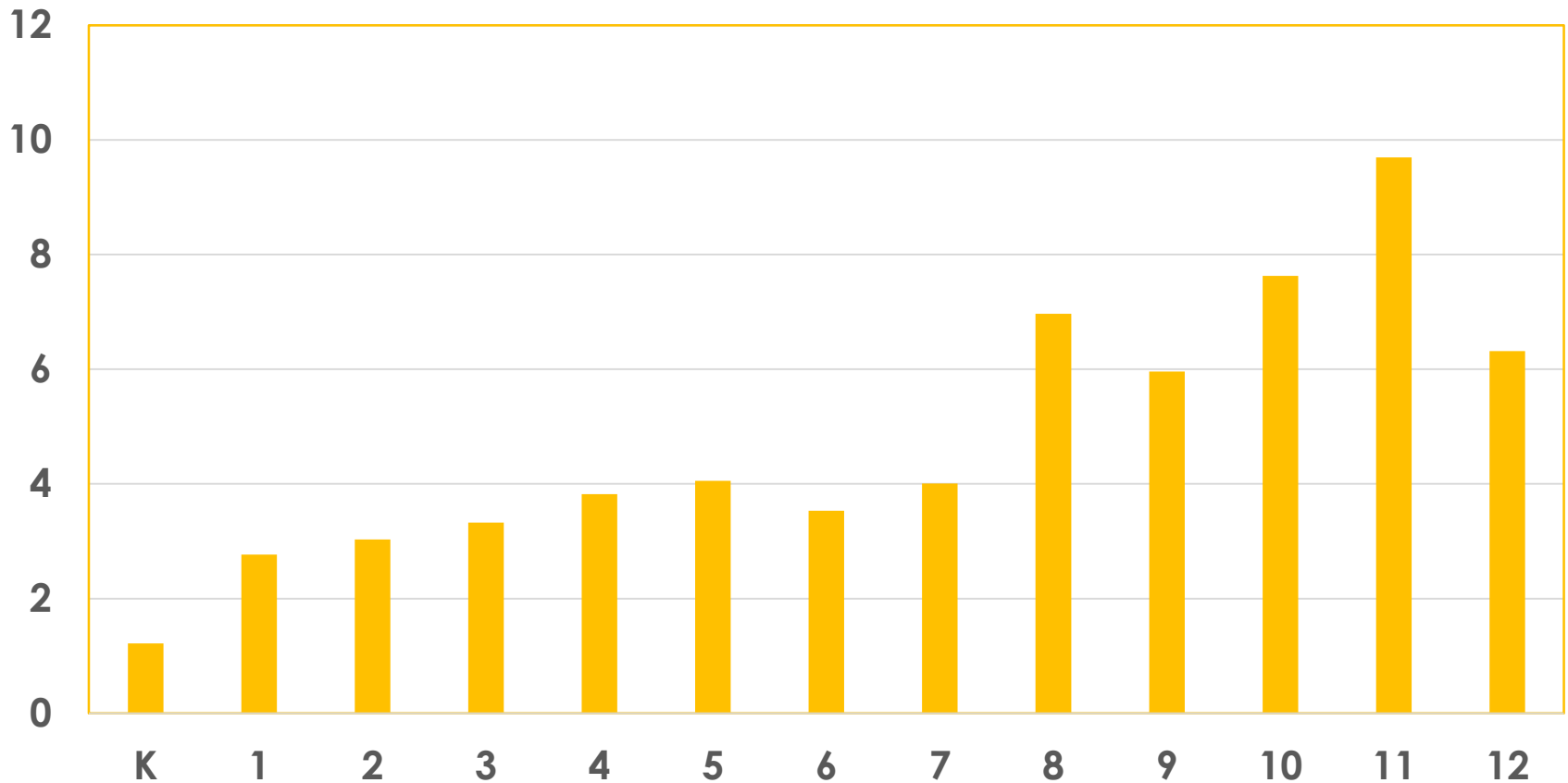
High School Survey Data

Average Homework & Study Hours per week by Level



Homework Survey - Students

Homework & Study Hours by Week & Grade



What are parents saying?

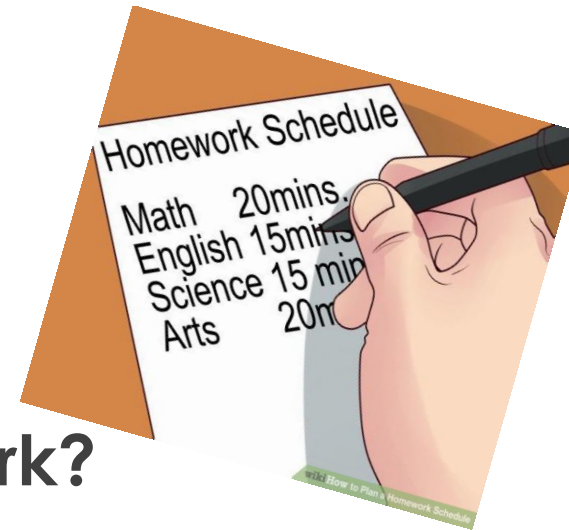
Results of our 2016 parent survey regarding homework:

| | | # of Minutes spent on HW | | | |
|---|---------------------|--------------------------|--------------|---------------|-------------------|
| | | <u>0-30</u> | <u>30-60</u> | <u>60-90</u> | <u>90 or more</u> |
| On average, how much time does your child spend on homework on weekday evenings? | <u>no HW at all</u> | 33% | 32% | 20% | 15% |
| On average, how much time does your child spend on homework on weekends? | | 56% | 19% | 12% | 14% |
| What do you feel is an appropriate amount of daily homework for your child's grade level? | | 35% | 43% | 18% | 4% |
| How much homework do you feel is appropriate for a student to have over the weekend? | 38% | 27% | 20% | 12% | 4% |
| | | | | | |
| | | <u>Always</u> | <u>Often</u> | <u>Rarely</u> | <u>Never</u> |
| How often does the homework appear to be busywork? | | 4% | 30% | 55% | 12% |

Discussion Groups

8-6-4

- ▶ What is the purpose of homework and how can we make it meaningful?
- ▶ How much time is appropriate for students to spend completing homework?
- ▶ How does homework impact your family?



Discussion Prompts

8-6-4

- ▶ Discuss and record thoughts on chart paper.
- ▶ Descending time as you rotate (8-6-4).
- ▶ Add comments or check if you agree with a comment.
- ▶ Return to start and report out two key points for the group.

Next Steps

- ▶ **Develop larger committee of staff, parents, students to study at a deeper level**

First meeting-Wednesday, February 1 @ Peirce MS

- ▶ **Draft a policy with some guidelines on homework**
- ▶ **Implementation**

Room Assignments

| <u>Room</u> | <u>Last Name</u> |
|-------------|------------------|
| ▶ C101 | A - B |
| ▶ C102 | C - D |
| ▶ C103 | F - Her |
| ▶ C104 | Hes - K |
| ▶ C106 | L - O |
| ▶ C107 | P - R |
| ▶ C108 | S |
| ▶ C109 | T - Z |